

Open source @ scale

10,000 engineers and counting

@jeffmcaffer

@jeffwilcox

Microsoft Open Source Programs Office



10,000

members

7,000

repos

27,000

use registrations

1,000

release requests

2X

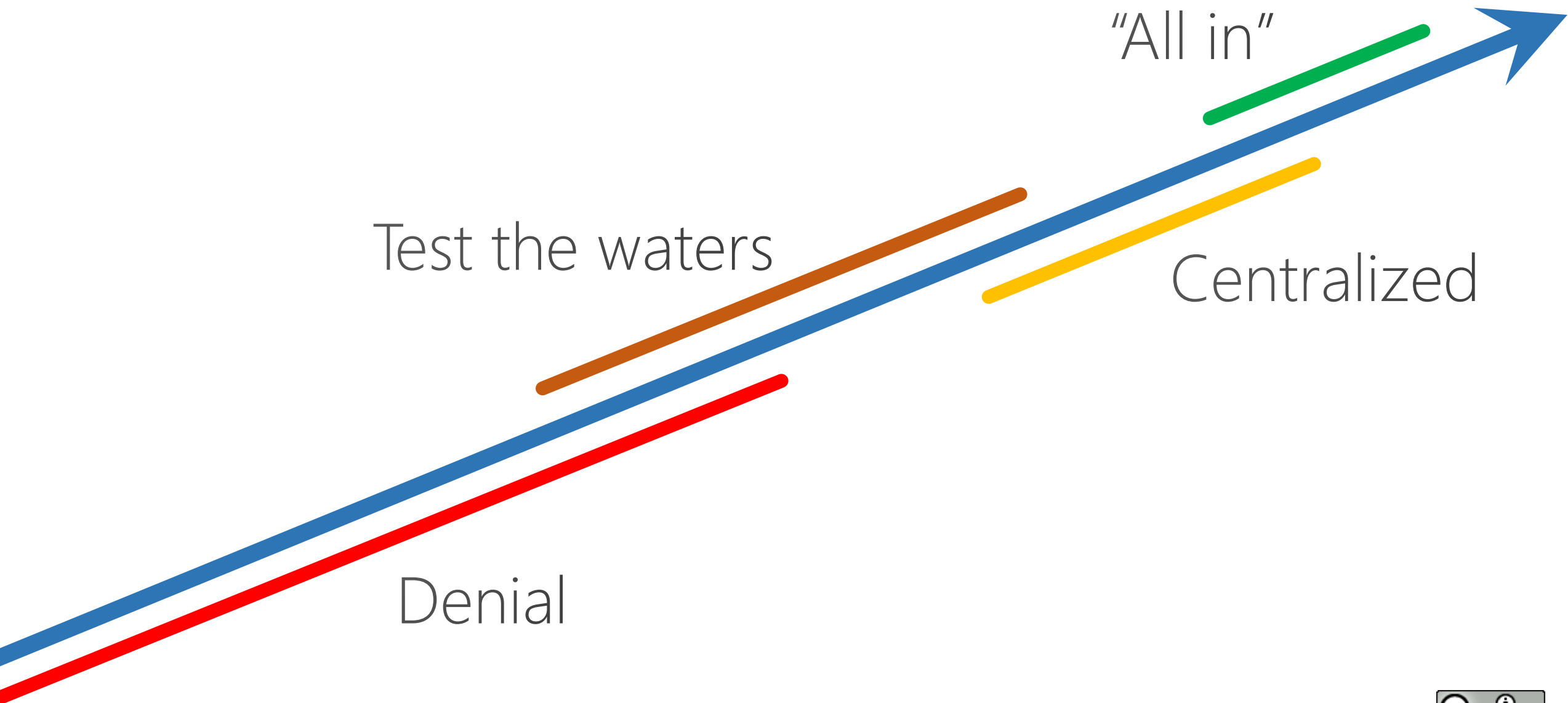
yearly growth

1000s

vulnerabilities

100

Evolution



Open Source Programs Office

Evolved out of legal, into engineering

Board of directors of execs from major businesses

Highly collaborative

Engineering, legal, security, business, accessibility, ...

Major initiatives around

Policy and process

Tools

Culture

What does our OSPO do?

Culture

Coordinate interested parties

Drive culture

Management buy in

Business Playbooks

Rewards, recruiting and retention

Industry collaboration

Internal/external community

Conferences

Create open source tools

Processes and Tools

Define policies and processes

GitHub management

Repo landing pages

Open source repo linters

Disaster recovery/backup

Use, Contribute, Release workflows

Automation

IP scanning workflows

Component security

Attribution service

CLA

Source code disclosure site

Package (e.g., NPM) publishing

Operational systems

GitHub API proxy / operations API

Information

Public presence

Data and insights – GitHub, package managers, build, social, governance

Track org/product structure

GitHub-Microsoft id mapping

Share data publicly

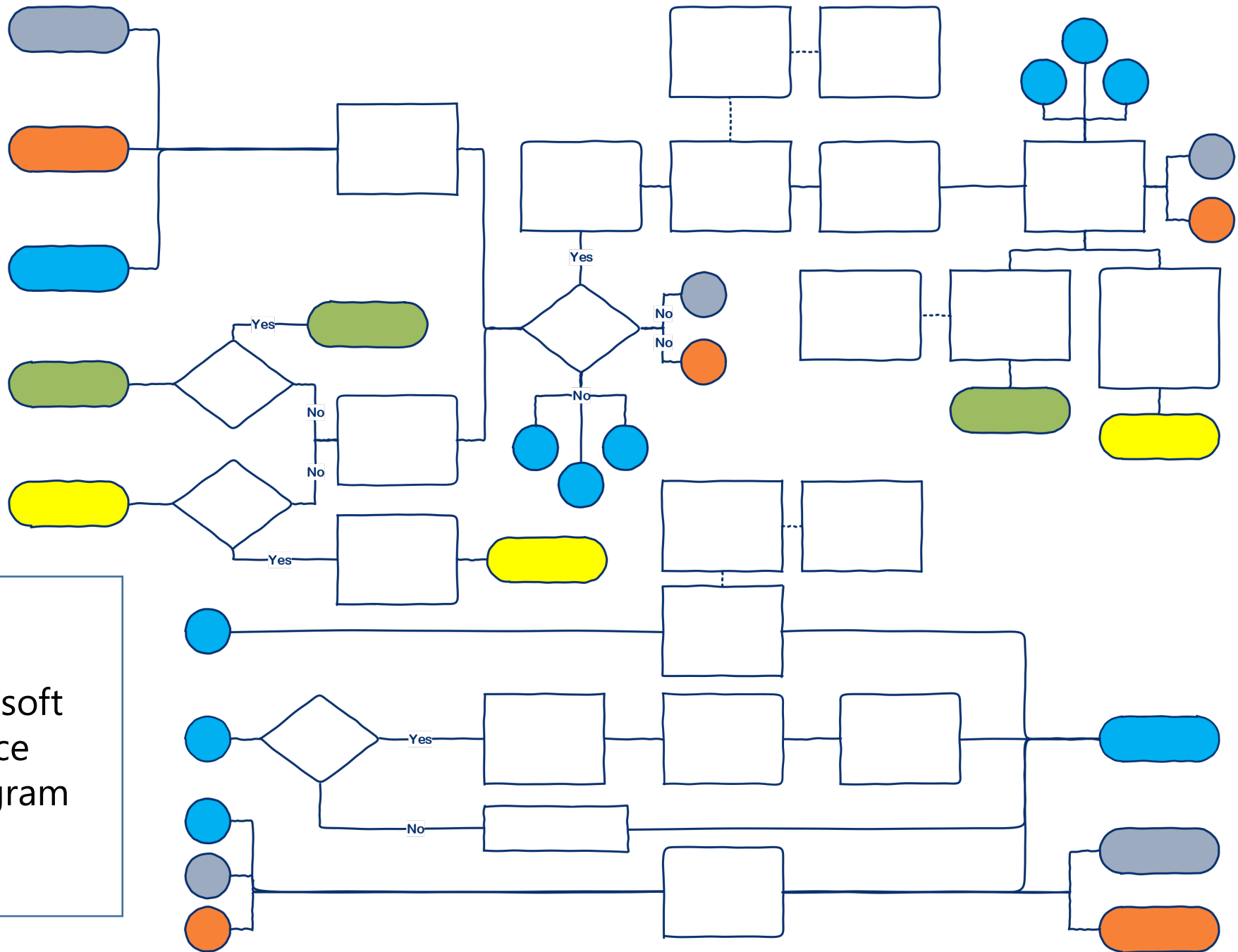
Training

Documentation

Open source policy

Less is more...

// Some code required



Actual Microsoft
open source
decision diagram

Simplify & unify policy

Using open source

Registering use

IP separation

Contributing

IP scanning

Component security

Release open source

Is approval needed?

Approval process

Patent review

Automation & delegate everywhere

Codified policies

Machine-readable data

Licenses, copyrights, company directory, product definitions, GitHub data


Approval workflow integration

People management

Repo linters

Component use registration

Build succeeded

Run node 

Ran for 5.1 minutes (Hosted Agent), completed 12 days ago

```
17-02-02T17:45:44.5376608Z register
17-02-02T17:45:45.0406618Z runtimeDependencies: 0
17-02-02T17:45:45.0416616Z devDependencies: 314
17-02-02T17:45:45.0416616Z totalDependencies: 314
17-02-02T17:45:45.0456623Z Registering dependencies...
17-02-02T17:45:45.0496617Z '{"context":{"user":"willbar","ms.internal":true,"ms.group":"C+E -
17-02-02T17:47:21.2613688Z '{"context":{"user":"willbar","ms.internal":true,"ms.group":"C+E -
17-02-02T17:48:51.7141315Z '{"context":{"user":"willbar","ms.internal":true,"ms.group":"C+E -
17-02-02T17:50:36.4353621Z '{"context":{"user":"willbar","ms.internal":true,"ms.group":"C+E -
17-02-02T17:50:50.1303307Z Registration completed:
17-02-02T17:50:50.1443307Z Registered: 314
17-02-02T17:50:50.1443307Z See results in bin/ossccg/ossccg-result.json
17-02-02T17:50:50.1443307Z See pending review components in bin/ossccg/ossccg-pending.json
```

Our six-month 2FA challenge

[Insert your own favorite corporate process jokes here]

Two-factor auth is important to protecting the brand & pending releases

Let's ping folks to enable it again

Our self-service Github already enforces 2FA

This should be easier, FYI GitHub

GitHub's API identifies our members without 2FA, nice

GitHub is shipping a new org security checkbox feature!

Why are people turning off 2FA?

We should warn machine accounts

Oh wait, what about collaborators?

Let's ping folks to enable it

Good, this new API is great

Hard deadline of October

Communicate again

How do we get in touch with our GitHub members?

Two-factor authentication

Requiring an additional authentication method adds another level of security for your organization.

☒ Require two-factor authentication for everyone in the Microsoft organization.

Members, billing managers, and outside collaborators who do not have two-factor authentication enabled for their personal account will be removed from the organization and will receive an email notifying them about the change.

Save

Authentic open source experiences

Great feedback loop in place with GitHub

Let GitHub do what it's great at

Immediately use new features

Attract & retain engineers – tools we love

People management

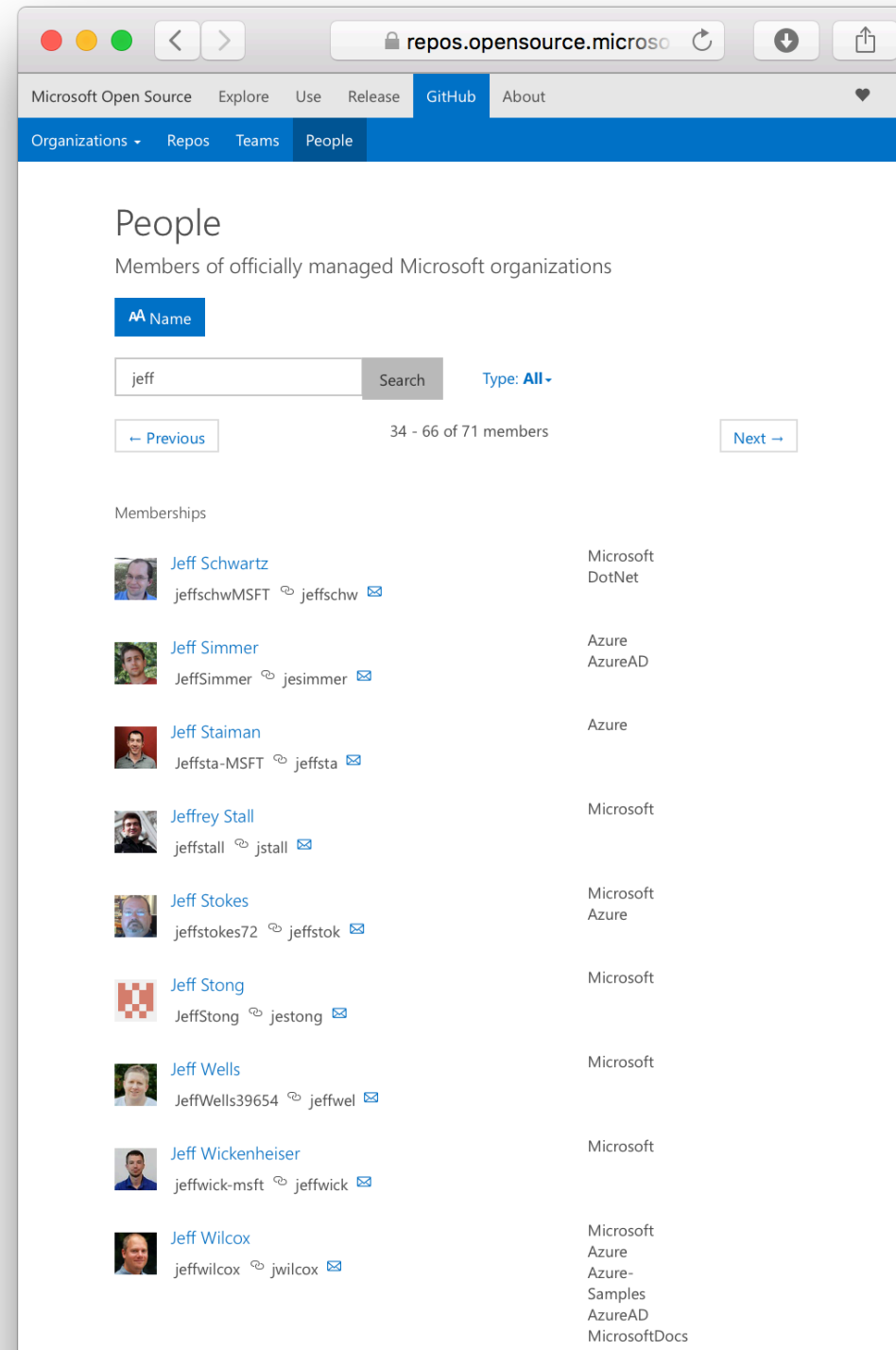
Who is this username?

How can I identify peers?

Self-service onboarding

Automated employment cycle

Delegated permission decisions



The screenshot shows the 'People' page on the Microsoft Open Source website. The page title is 'People' and the subtitle is 'Members of officially managed Microsoft organizations'. There is a search bar with the text 'jeff' and a 'Search' button. Below the search bar, it says '34 - 66 of 71 members'. There are 'Previous' and 'Next' navigation buttons. The page lists several members with their profile pictures, names, and usernames. The members listed are:

- Jeff Schwartz (jeffschwMSFT)
- Jeff Simmer (JeffSimmer)
- Jeff Staiman (Jeffsta-MSFT)
- Jeffrey Stall (jeffstall)
- Jeff Stokes (jeffstokes72)
- Jeff Stong (JeffStong)
- Jeff Wells (JeffWells39654)
- Jeff Wickenheiser (jeffwick-msft)
- Jeff Wilcox (jeffwilcox)

Each member's name is a link, and their username is followed by a small icon and an email icon. The organizations they are associated with are listed on the right side of the page.

Microsoft Open SourceExploreUseReleaseGitHubAbout

OrganizationsReposTeamsPeople

Your Microsoft GitHub organizations

Azure

Official Azure SDKs, products and resources predating the official Microsoft GitHub org

Azure-Samples

Azure Samples as indexed by Azure.com

AzureAD

Azure Active Directory SDKs

Microsoft

The official Microsoft GitHub organization for open source projects

Available Microsoft GitHub organizations

aspnet

Join

ASP.NET and ASP.NET Core open source project

Additional Organizations

The following organizations are specialized for specific teams and projects, but not general-purpose membership. Please only join if you have a business need.

Azure-AppService-Samples

Join

Azure App Service product samples separate from the Microsoft and Azure-Samples orgs

CNTK-components

Join

Extra Microsoft CNTK components that have license restrictions

Microsoft-Notes

Join

Private organization for Microsoft Notes engineering

MicrosoftArchive

Join

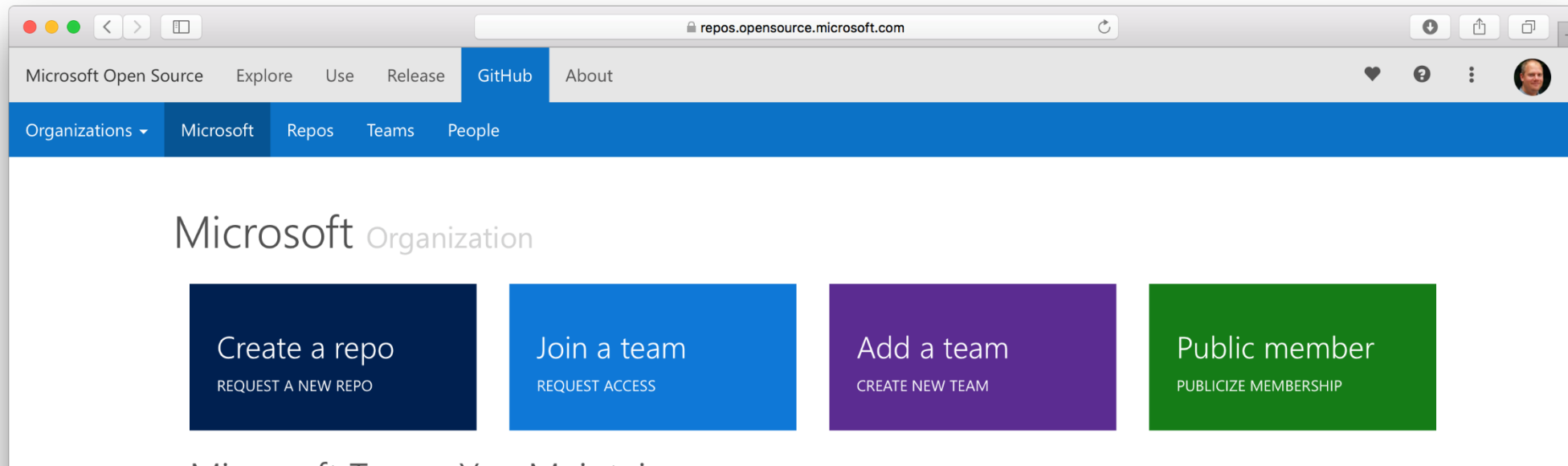
GitHub management

Diverse corporate GitHub user base

Approach evolved from the wild west

Enable cross-organization scenarios

Our repo create wizard is efficient, easy, adds value



Microsoft Open SourceExploreUseReleaseGitHubAbout

OrganizationsReposTeamsPeople

Repositories

Across all officially managed Microsoft organizations

Recent commits

Stars

Forks

AA Name

Updated

Created date

Search repositories...

Search

Type: public

Language: All

Teams: myadmin

100 results for public repositories and my admin team permissions

Clear filter

Previous

1 - 20 of 100

Next

ospo-ghcrawler

GitHub crawler

JavaScript 4 Updated 2 hours ago Created 4 months ago

Microsoft organization

service-fabric-dotnet-data-aggregation

Need to create a repo?

To create a new repo, first you need to select which organization will host it.

Organizations

Azure

Azure-AppService-Samples

Azure-Readiness

Azure-Samples

AzureAD

AzureCAT-GSI

CNTK-components

DotNet

Microsoft Open SourceExploreUseReleaseGitHubAbout

OrganizationsAzure-SamplesReposTeamsPeople

service-fabric-dotnet-data-aggregation

Azure-Samples organization

Learn about large-scale data aggregation and management of large volumes of end-user devices with Service Fabric.

JavaScript MIT License 12 12

Metrics

34 watchers

6 open issues

Pull requests: 3

Pull requests applied: 2

Pull requests NOT applied: 0

Average days taken to close pull requests: 5

Average hours taken for first response to pull requests: 0

Pull requests opened per day: 1

Pull requests applied per day: 0

Closed issues: 0

Average days taken to close issues: 0

Timeline

Commits pushed 21 hours ago

Updated 16 days ago

Created a year ago

Clone

HTTPS

https://github.com/Azure-Samples/service-fabric-dotnet-data-aggregation.git

SSH

git@github.com:Azure-Samples/service-fabric-dotnet-data-aggregation.git

Team permissions

CC

BY

28.3495 grams of prevention

2FA & 3rd-party app approval on for GitHub orgs

Have a clear, enforced private repo policy

Minimize organization owners

Guidance engineers grok

Comms plan

In progress

Playbooks

Frame the conversation

Business, engineering, governance

Learn and collaborate across the company

Across the industry

<https://opensource.guide>

Linux Foundation

TODOgroup.org

Insights

Gather data

GitHub, company systems, social media, packaging systems, ...

Analysis

Project health, API use, community shape, trends, product uptake, ...

Make widely available

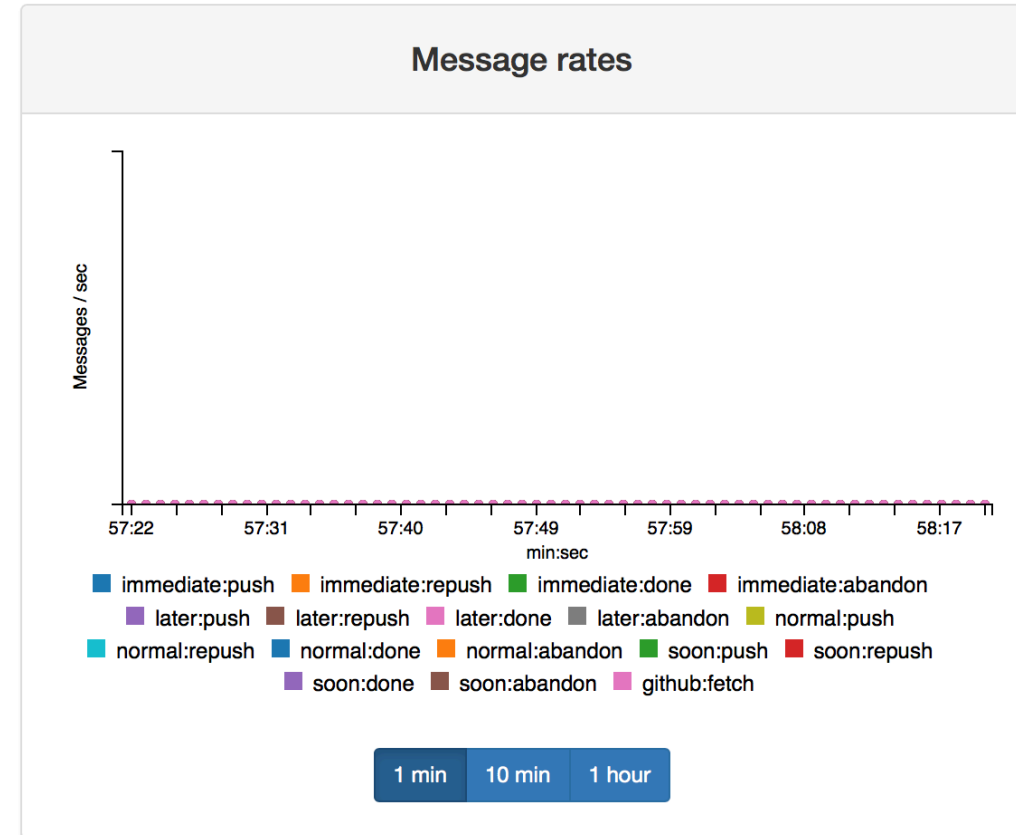
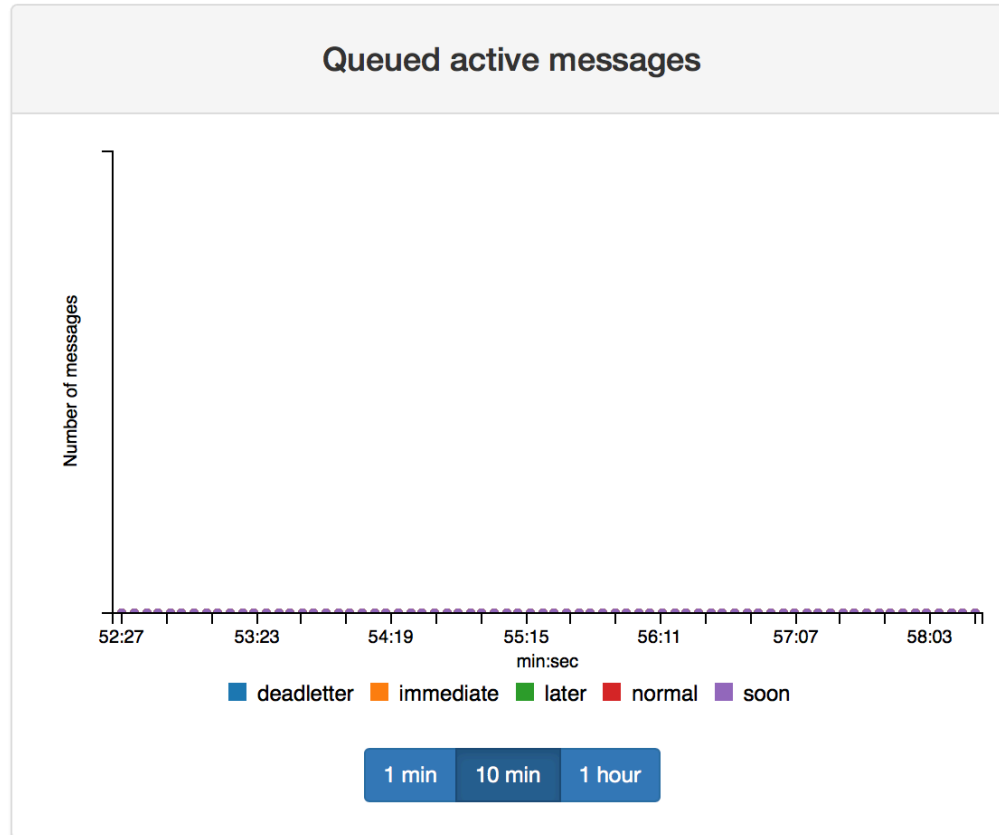
Crawler-in-a-box (CIABatta) – <https://github.com/microsoft/ospo-ghcrawler>

Raw data – <https://github.com/microsoft/ghinsights>

Insights dashboards– coming

Crawler in a box

Crawler Dashboard



TODOgroup.org



<https://opensource.microsoft.com>

@jeffmcaffer
@jeffwilcox

Thanks!